

PC Software Installation Instruction



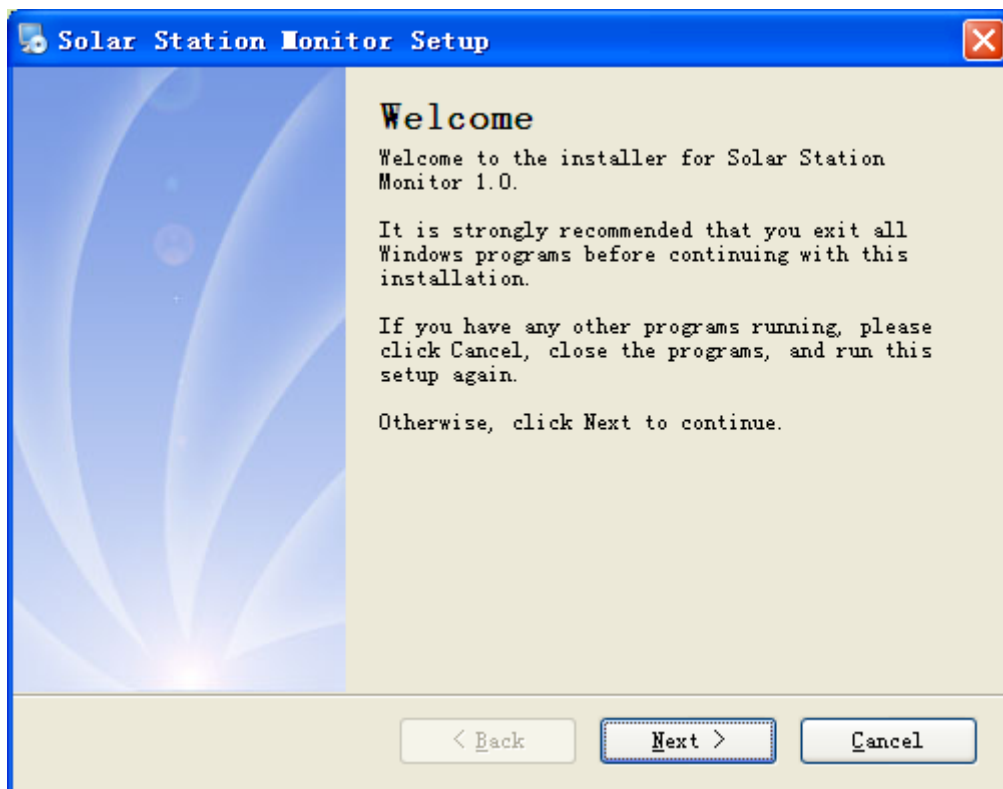
Solar Station

Monitor_V1.5 Setup

- 1、 Pls find the installation package and double-click to enter.

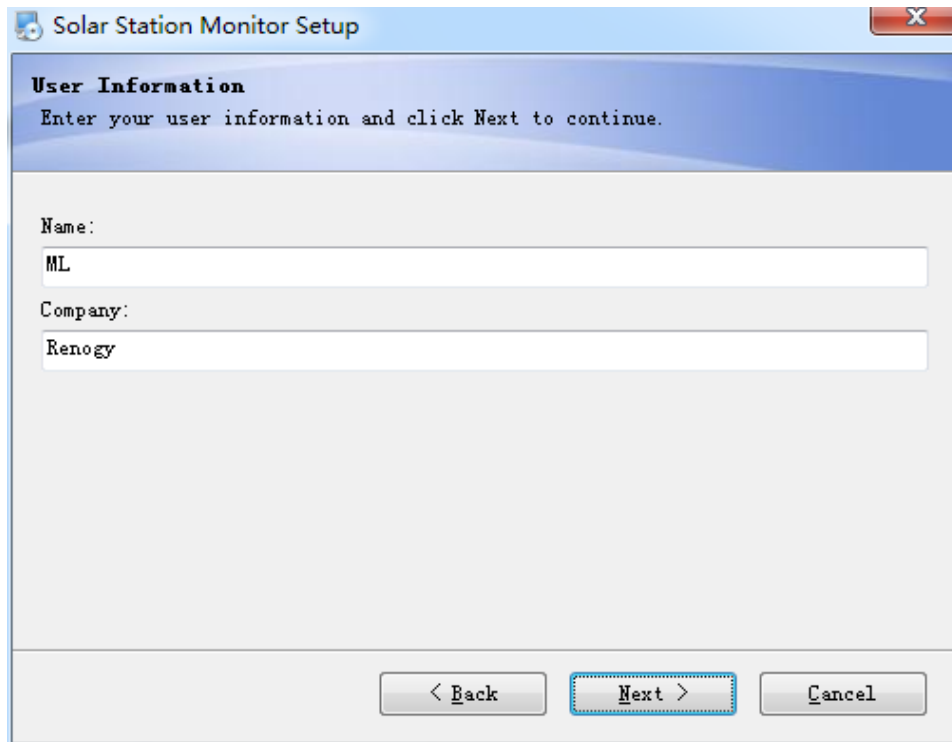
Closing the anti-virus software is suggested before enter into installation program.

- 2、 Enter into the 1st step of installation, then click"Next".

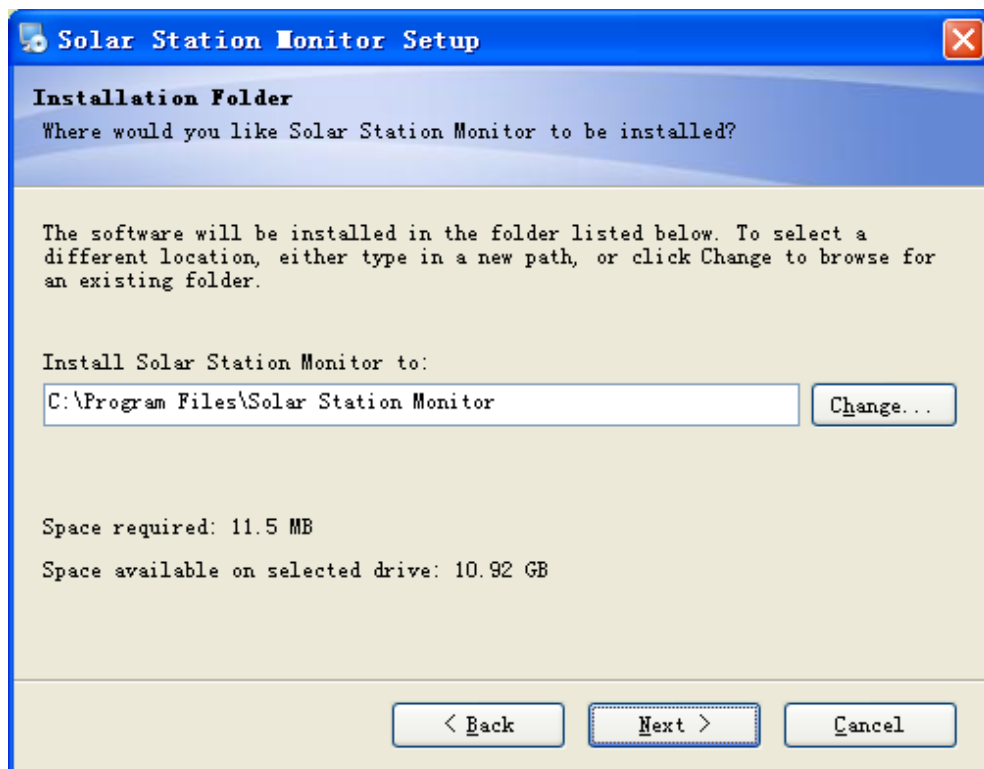


PC Software Installation Instruction

3、 Enter into the 2nd step of installation, and click”Next” after log in user info.

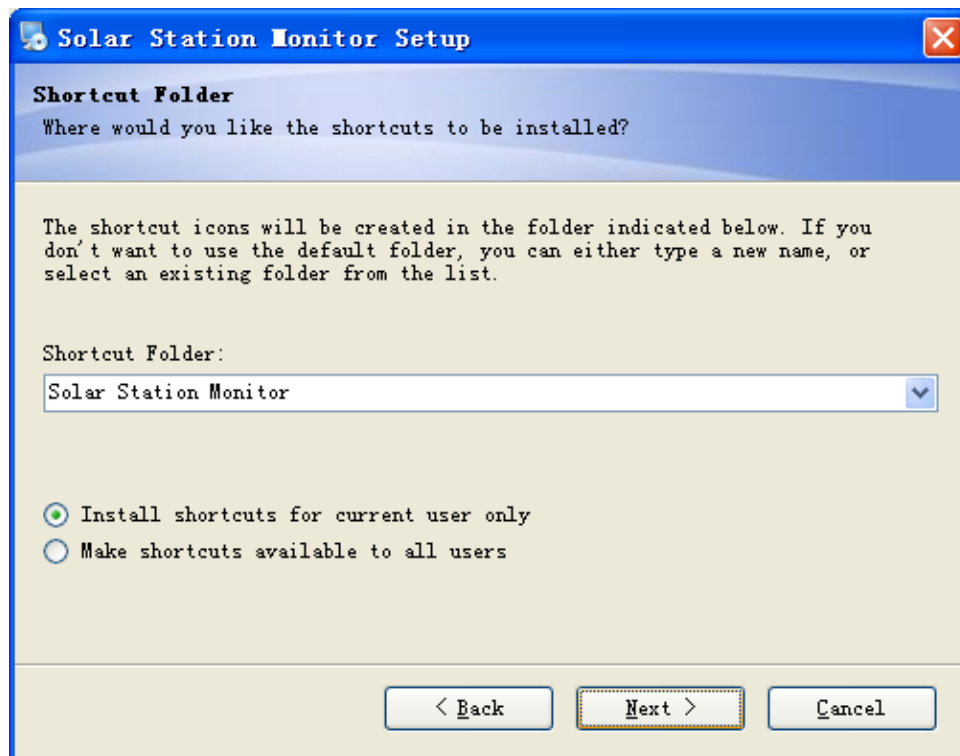


4、 Click”Next” after choosing i nstallation directory.

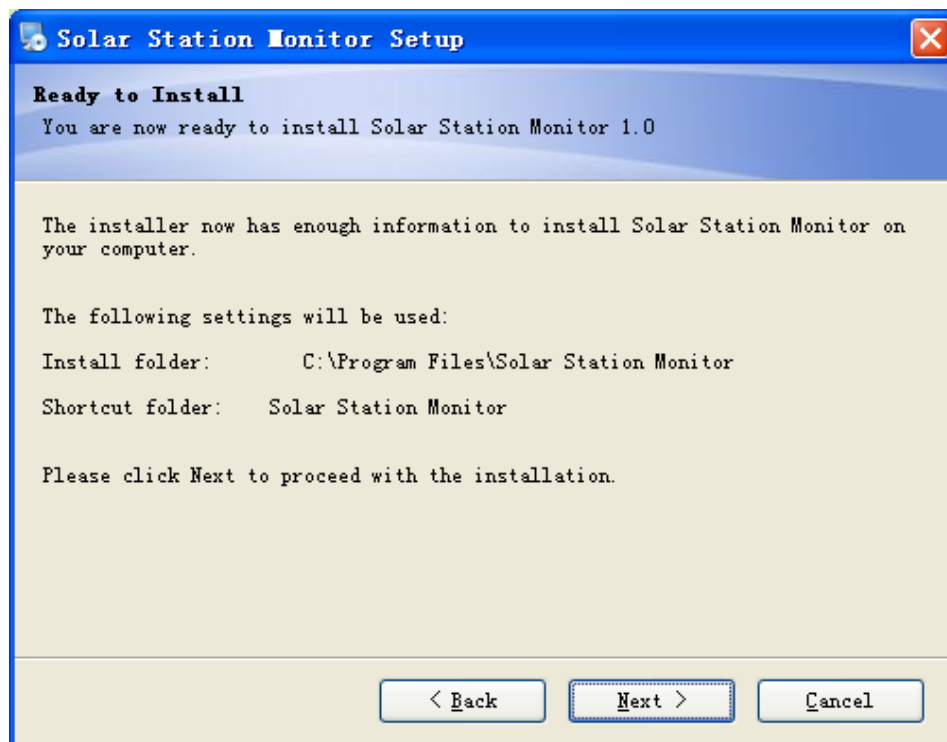


PC Software Installation Instruction

5、Click "Next" after choosing path folder.

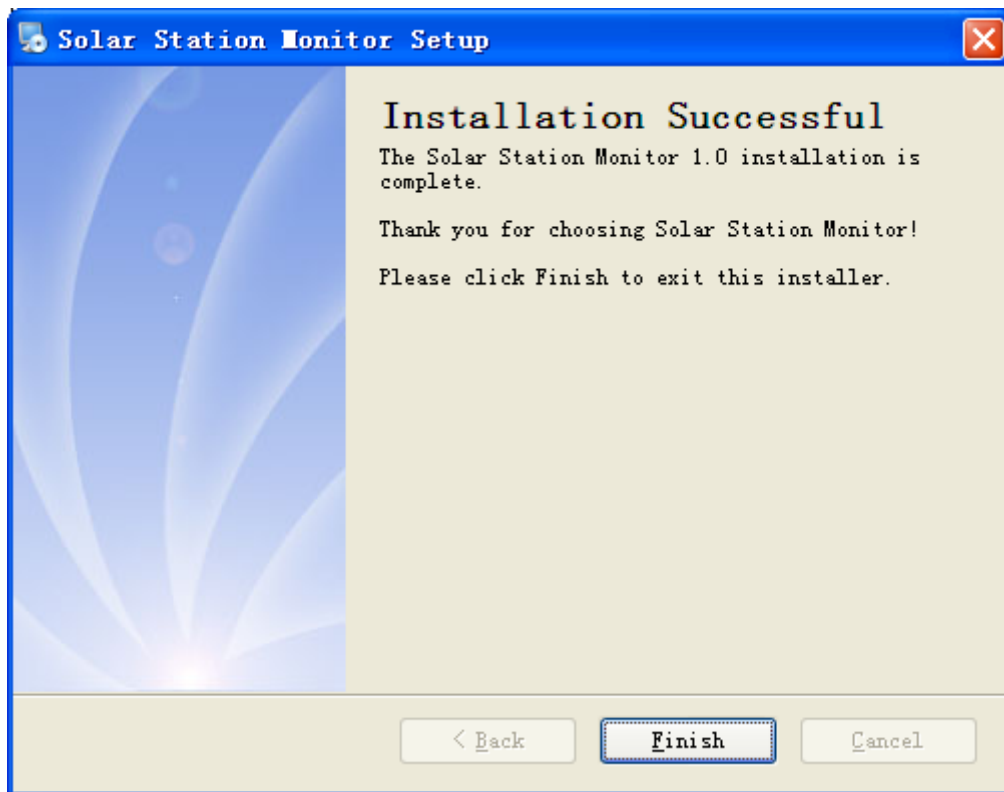


6、Click "Next" after confirming installation info.



PC Software Installation Instruction

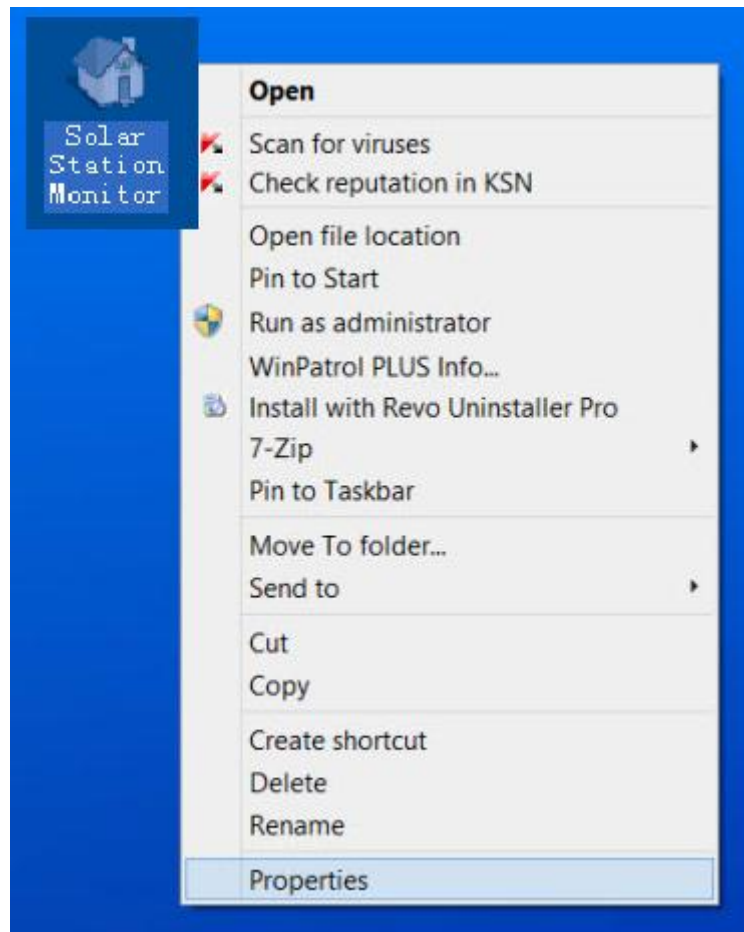
7、 When installation finished, click “Finish” to exit.



PC Software Installation Instruction

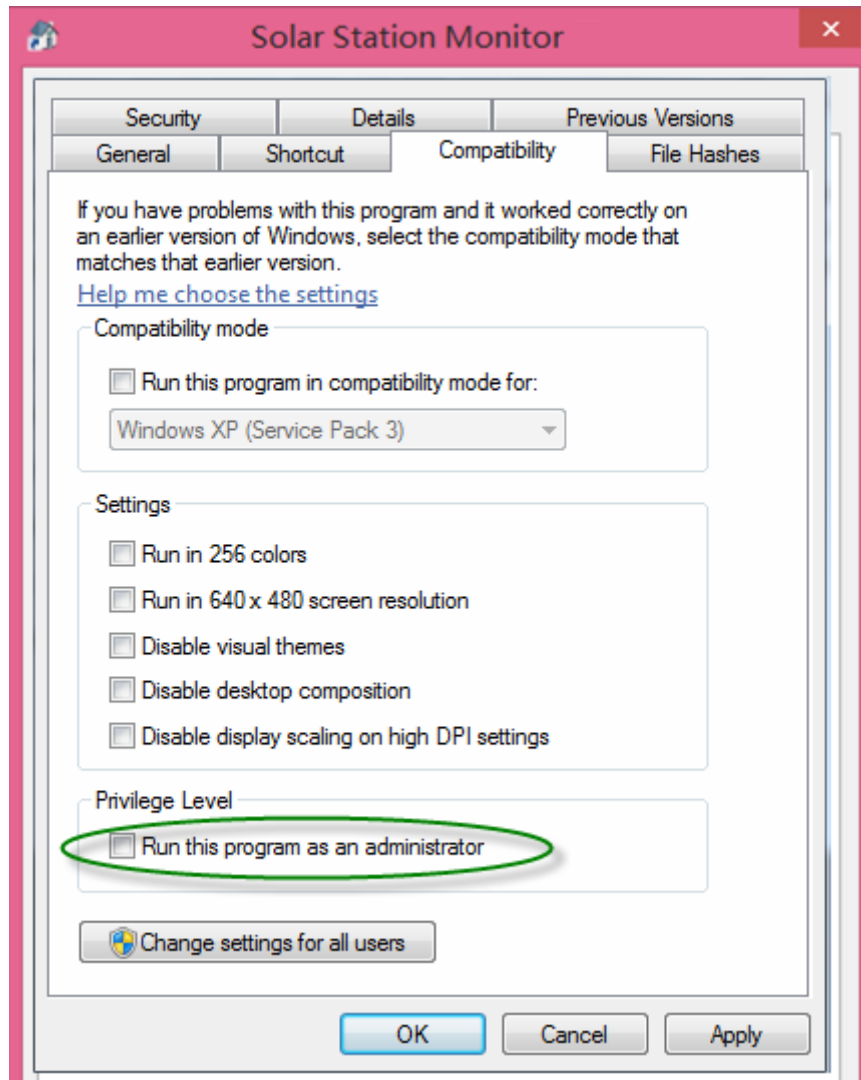
8、 If your system is WINDOWS 7 or above, the system may have superior authority , management on software, you need to install below setting to use the software.

Step 1: Find the software icon of Solar Station Monitor, a dialog box will be shown after click the right click of the mouse, then pls find “Properties” and click it.



PC Software Installation Instruction

Step 2: Choose “Compatibility” under property dialog box and click it to enter the setting for software compatibility.

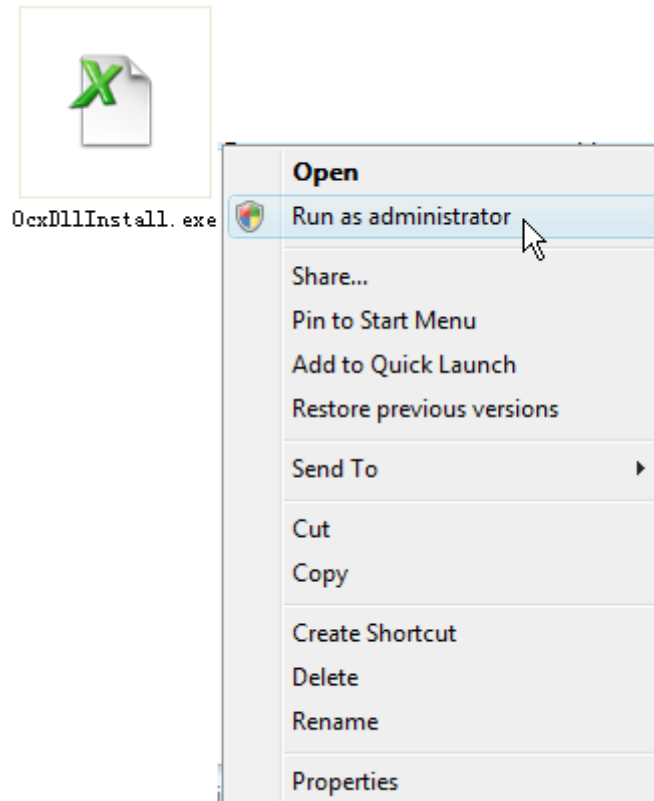


Step 3: Find the “Run this program as an administrator” under upper computer software property dialog box, and then select it.

Step 4: When above steps finished, click “OK” to exit.

PC Software Installation Instruction

9、 If the software still not work, then you should enter into software installation catalog and find “OcxDllInstall.exe”, click the right click to find “Run as administrator” to operate, the system will re-log widget.



10、 When installation finished, you need to install USB-RS232 driver, then the software works.